

# CAMERA/HOUSING PACKAGES - VideoKit™ RC200-5A Ceiling Housing



## DESCRIPTION

The unique design of the **VideoKit™ RC200** allows it to be manually rotated 360°, giving users great flexibility for indoor applications. Its built to be used in suspended ceiling applications, replacing a standard 2' x 2' tile, and its light weight means no special supports are needed. Each RC200-5A includes a fixed hi-res color camera with 2.8-12mm auto iris lens.

## CERTIFICATIONS

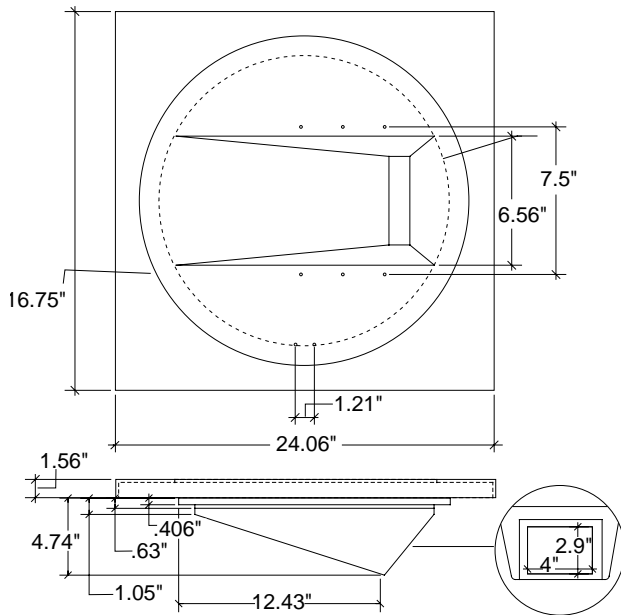
- Complies with Part 15 of the FCC Rules

## FEATURES

- Fixed hi-res color camera with 2.8-12mm auto iris lens
- Unit is manually adjustable for 360° positioning
- Housing is manufactured from high-impact, off-white plastic
- Lightweight plastic housing requires no special ceiling support attachments
- Viewing window sonically welded to a snap-in mount
- OD1 optional metal back box available for plenum applications to comply with standard building codes

## ARCHITECTURAL/ENGINEERING SPECIFICATIONS

The ACE20-5A shall be constructed from high-impact off-white polycarbonate, and shall contain a clear polycarbonate viewing window. The base plate shall be polycarbonate, and shall contain three conduit knockouts on the bottom section for cable and wiring entry. The housing cover shall be attached to the base plate, and secured with two tamper-resistant fasteners. The camera shall have a horizontal resolution of 460 TV lines, with a minimum illumination of 1.2 Lux in normal mode and 0.8 Lux in hi gain mode at F1.2.



## MODELS

**RC200-5A** - Indoor ceiling fixed camera system with hi-res color camera, 2.8-12mm auto iris lens, manually adjustable wedge section, injection molded housing, 24 VAC input

## OPTIONS/ACCESSORIES

**OD1** - RC200C metal dust cover

## ELECTRICAL SPECIFICATIONS

**Power Input** - 24 VAC

**Power Consumption**

**Camera** - 5 watts (208mA)

**CAMERA SPECIFICATIONS - see page 40**

## SHIPPING SPECIFICATIONS

Model	Unit Weight	Shipping Weight	Shipping Box Dim.
RC200-5A	8.40 lbs	30 Grd/30 Air	7 x 28 x 28

\* Shipping weights depend on box dimensions.



## CAMERA SPECIFICATIONS

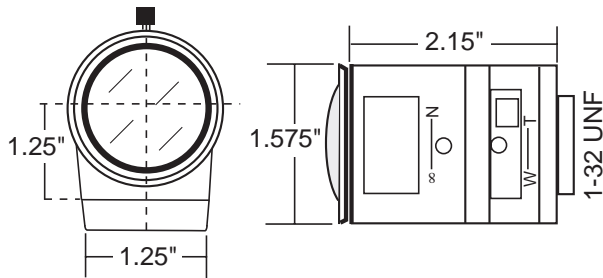
- Power Input - 24 VAC
- Image Sensor - Interline 1/3" Sony Super HAD CCD
- Scanning System - 2:1 Interlaced
- Sync System - Internal/Linelock (Switchable)
- Horizontal Resolution - 460 TV Lines
- Signal to Noise Ratio - 48db or more (AGC off)
- Minimum Resolution (F1.2) - 1.2 Lux Normal Mode  
0.8 Lux Hi Gain Mode
- Gain Control - Automatic
- Backlight Compensation - Center Zone Detection (on/off switchable)
- White Balance - Automatic/Hold (push lock)
- Dimensions - 1.9" (H) x 1.9" (W) x 3.3" (L)

*Super HAD CCD is a registered trademark of Sony Corporation*

## LENS SPECIFICATIONS

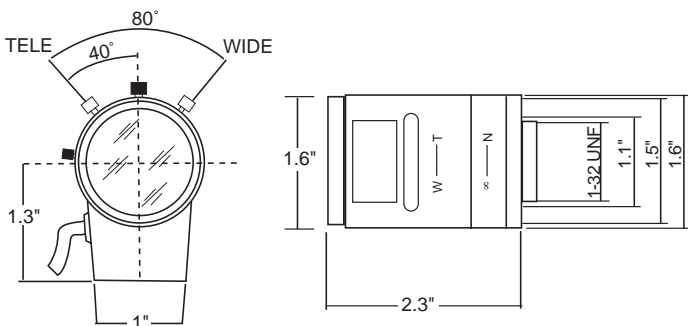
### 2.8 - 12mm Lens

- Focal Length - 2.8 to 12mm
- Iris Range - F1.4 to 360
- Iris Operation - Auto Iris
- Focus Operation - Manual
- Diameter - 1.57"
- Length - 2.2"



### 5 - 50mm Lens

- Focal Length - 5 to 50mm
- Iris Range - F1.4 to 185
- Iris Operation - Auto Iris
- Focus Operation - Manual
- Diameter - 1.7"
- Length - 2.3"



*Neither the camera nor lens is available as a separately ordered item*