



DESCRIPTION

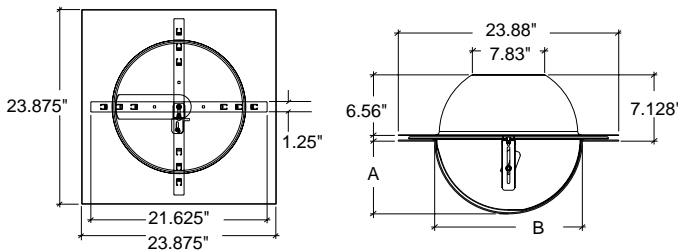
The ObservaDome™ recessed series is specifically designed for drop ceiling applications where fixed cameras are used. It easily replaces existing 2' x 2' ceiling tiles, offering discreet placement of cameras.

FEATURES

- Full 360° viewing capability
- Includes dust cover and liner with pre-cut viewing window available (not available in Econo Series)
- Up to four cameras can be mounted in the OH201 and OH206
- Complete with adjustable swivel head for mounting fixed camera
- Position of camera not disclosed by background lighting
- Works well with color cameras
- Approximately 1 to 1.5 F-stop light reduction with tinted domes

ARCHITECTURAL/ENGINEERING SPECIFICATIONS

The ObservaDome™ recessed series shall be a 12", 16" or 20" diameter indoor recessed housing designed to replace a 2' x 2' ceiling tile. The housing shall be manufactured from .10" thick cell-cast acrylic; either clear or tinted (1 to 1.5 F-stop light reduction) will be available. Two 18-gauge galvanized steel support channels will provide mounting for up to four fixed cameras and brackets (20" model). A single camera swivel shall be supplied, constructed from 18-gauge CRS with a black zinc finish. This bracket will be adjustable for different mounting angles and viewing directions. A .06" -thick black ABS plastic opaque liner with pre-cut viewing window shall be included for camera discretion, except in the Econo Series. A black plastic cover shall be furnished to provide protection from dust and to block unwanted back lighting, except in Econo Series.



Model	A	B
OH121/126T	6"	12"
OH161/166T	8"	10"
OH201/206T	10"	20"

Model	Maximum Camera Length			
	1	2	3	4
OH121T/126T	8"			
OH161T/166T	12"	10"		
OH201T/206T	15"	14"	9.5"	5"

MODELS (Econo Series)

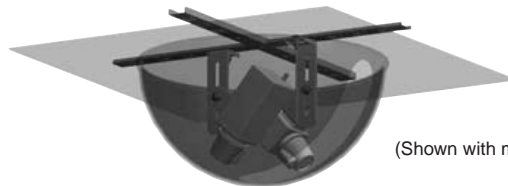
- OH126T** - 12" diameter indoor recessed housing with fixed camera bracket and tinted lower dome; replaces 2' x 2' ceiling tile
- OH166T** - 16" diameter indoor recessed housing with one fixed camera bracket and tinted lower dome; replaces 2' x 2' ceiling tile
- OH206T** - 20" diameter indoor recessed housing with one fixed camera bracket and tinted lower dome; replaces 2' x 2' ceiling tile

Replace "C" with "T" in model number for tinted dome (1 F-stop light reduction).

OPTIONS/ACCESSORIES

- OD1** - Metal dust cover for plenum ceiling applications
- FM2** - Additional swivel camera bracket

NOTE: If the application calls for more than one camera in the unit, an additional FM2 bracket will need to be purchased for each camera.



(Shown with multiple cameras)

MODELS (Recessed Series)

OH121CL - 12" diameter indoor recessed housing with fixed camera bracket, dust cover, liner with pre-cut viewing window, and clear lower dome; replaces 2' x 2' ceiling tile

OH122D - OH121 (Dummy Dome)

OH161CL - 16" diameter indoor recessed housing with one fixed camera bracket, dust cover, liner with pre-cut viewing window, and clear lower dome; replaces 2' x 2' ceiling tile

OH162D - OH161 (Dummy Dome)

OH201CL - 20" diameter indoor recessed housing with one fixed camera bracket, dust cover, liner with pre-cut viewing window, and clear lower dome; replaces 2' x 2' ceiling tile

OH202D - OH201 (Dummy Dome)

SHIPPING SPECIFICATIONS

Model	Unit Weight	Shipping Weight	Shipping Box Dim.
Standard			
OH121/161TL/CL	16 lbs	30 lb Grd/70 lb Air	29 x 29 x 16
OH122/162/202D	13 lbs	30 lb Grd/70 lb Air	29 x 29 x 16
OH201TL/CL	16 lbs	30 lb Grd/70 lb Air	29 x 29 x 16
Econo			
OH126T/C	15 lbs	30 lb Grd/70 lb Air	29 x 29 x 16
OH166T/206T/C	14 lbs	30 lb Grd/70 lb Air	29 x 29 x 16

* Shipping weights depend on box dimensions.