

CAMERA/HOUSING PACKAGES - VideoKit™ IPCH8-5A Wall Housing

DESCRIPTION

The attractive styling and compact size of the **VideoKit™ IPCH8-5A** allows it to be used in a variety of indoor applications. It comes complete with a hi-res color camera with 2.8mm-12mm auto iris lens, which can easily be reached with the side hinged top. Both the off-white body and the viewing window are polycarbonate, as is the wall/ceiling mount included with each unit.



FEATURES

- Hi-res color camera with 2.8-12mm auto iris lens
- Polycarbonate body and viewing window
- Side hinged flip top
- Mount quickly converts between wall and ceiling configuration for use in any application

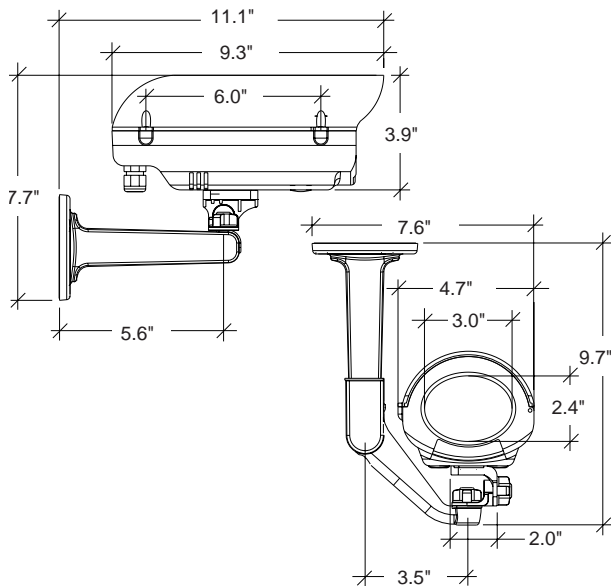


CERTIFICATIONS

- Complies with Part 15 of the FCC Rules

ARCHITECTURAL/ENGINEERING SPECIFICATIONS

The VideoKit™ IPCH8-5A housing shall be constructed of injection-molded polycarbonate and shall be intended for wall or ceiling mount applications. The housing top shall be secured to the housing with two 8-32 Phillips head screws with O-rings, and shall open from the side to allow access to the camera. The camera sled shall be designed with multiple positions and shall be secured when the housing top is fastened tightly. The housing shall include two liquid-tight fittings for cable access, and two hole plugs. The viewing window shall be high-impact clear polycarbonate. A bracket shall be included which will allow from conversion from wall to ceiling mount using included accessories. A fixed hi-res color camera shall be included, and shall feature an auto iris 2.8mm-12mm lens. The camera shall have a horizontal resolution of 460 TV lines, with a minimum illumination of 1.2 Lux in normal mode and 0.8 Lux in hi gain mode at F1.2.



MODELS

IPCH8-5A - Indoor fixed camera system with hi-res color camera, 2.8-12mm auto iris lens, injection molded housing with wall/ceiling mount, 24 VAC input

OPTIONS/ACCESSORIES

HTK24 - 24 VAC heater kit

KFL13 - 24 VAC flashing light kit for surveillance awareness

ELECTRICAL SPECIFICATIONS

Power Input - 24 VAC

Power Consumption

Camera - 5 watts (208mA)

CAMERA SPECIFICATIONS - see page 40

SHIPPING SPECIFICATIONS

Model	Unit Weight	Shipping Weight	Shipping Box Dim.
IPCH8-5A	3 lbs.	4 Grd/4 Air	13 x 9 x 7

* Shipping weights depend on box dimensions.



CAMERA SPECIFICATIONS

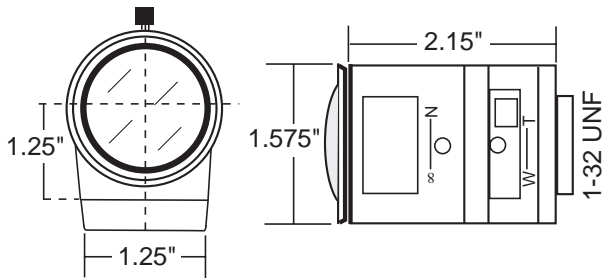
- Power Input - 24 VAC
- Image Sensor - Interline 1/3" Sony Super HAD CCD
- Scanning System - 2:1 Interlaced
- Sync System - Internal/Linelock (Switchable)
- Horizontal Resolution - 460 TV Lines
- Signal to Noise Ratio - 48db or more (AGC off)
- Minimum Resolution (F1.2) - 1.2 Lux Normal Mode
0.8 Lux Hi Gain Mode
- Gain Control - Automatic
- Backlight Compensation - Center Zone Detection (on/off switchable)
- White Balance - Automatic/Hold (push lock)
- Dimensions - 1.9" (H) x 1.9" (W) x 3.3" (L)

Super HAD CCD is a registered trademark of Sony Corporation

LENS SPECIFICATIONS

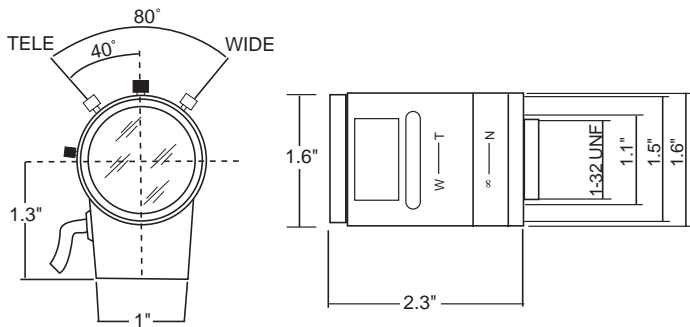
2.8 - 12mm Lens

- Focal Length - 2.8 to 12mm
- Iris Range - F1.4 to 360
- Iris Operation - Auto Iris
- Focus Operation - Manual
- Diameter - 1.57"
- Length - 2.2"



5 - 50mm Lens

- Focal Length - 5 to 50mm
- Iris Range - F1.4 to 185
- Iris Operation - Auto Iris
- Focus Operation - Manual
- Diameter - 1.7"
- Length - 2.3"



Neither the camera nor lens is available as a separately ordered item