

WALL AND CORNER HOUSINGS - IPCH8



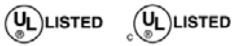
DESCRIPTION

The IPCH8 features a 9", injection-molded polycarbonate housing with high-impact polycarbonate viewing window. A variety of camera sizes from different manufacturers can be used, up to 8", thanks to the unique camera sled that locks in place when the housing top is closed and an included right angle BNC connector. All units come with the CWPM8 wall/ceiling mount and a J-bracket, which allow the IPCH8 to be converted to ceiling mount in a matter of moments. The IPCH8 can be used in indoor or limited outdoor applications.

FEATURES

- Attractive off-white plastic body and a compact size
- Adjustable camera sled
- Easy access to camera and camera sled
- Complete with polycarbonate universal wall/ceiling bracket
- Includes right-angle BNC connector and spacer
- Designed to meet CE/IP43 standards
- Optional 24 VAC flashing light kit for surveillance awareness
- Optional 24 VAC heater
- Also available as a VideoKit™ model with camera

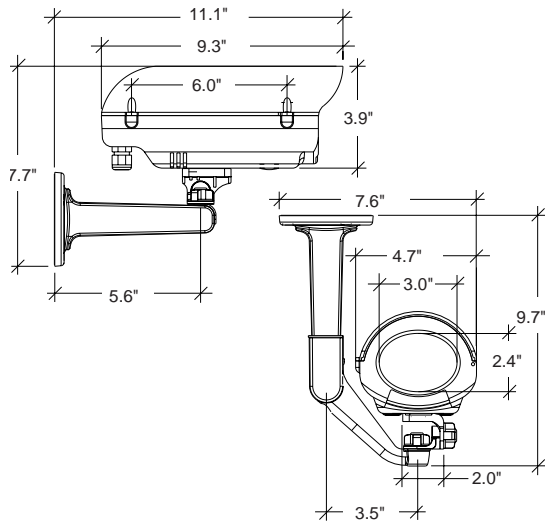
CERTIFICATIONS



(Shown open)

ARCHITECTURAL/ENGINEERING SPECIFICATIONS

The Videolarm IPCH8 housing shall be constructed of injection-molded polycarbonate and shall be intended for indoor and protected outdoor use. The housing shall support CCTV cameras with a maximum camera length of 8". The housing top shall be secured to the housing with two 8-32 Phillips head screws with O-rings. The housing top shall flip open from the side and will allow access to the camera. The camera sled shall be designed with multiple positions for various camera body sizes and shall be secured when housing top is fastened tightly. The housing shall come with two liquid-tight fittings for cable access and two hole plugs. The viewing window shall be high-impact clear polycarbonate. Brackets for wall or ceiling mount shall be included.



NOTE: MCL of 8" includes camera/lens and provided right angle BNC connector

MODELS

IPCH8 - A 9" injection-molded, decorative polycarbonate housing. Includes clear polycarbonate viewing window, multi-position camera sled, universal wall/ceiling bracket, and J bracket all in one box.

OPTIONS/ACCESSORIES

- HTK24** - 24 VAC heater kit
- KFL13** - 24 VAC flashing light kit for surveillance awareness

SHIPPING SPECIFICATIONS

Model	Unit Weight	Shipping Weight	Shipping Box Dim.
IPCH8	2 lbs	3 Grd/3 Air	13 x 9 x 7

* Shipping weights depend on box dimensions.