

DeputyDome

Bullet-Resistant Dome Camera System



"Videolarm's patented DeputyDome adds an unparalleled level of protection to your video security system. Exceeding UL Standard 752 - Level 1 protection, the DeputyDome is constructed of heavy-gauge stainless steel and incorporates a unique "turret" system, which enables the dome to absorb the shocks from attacking bullets (up to 9mm) being fired at the unit. This absorption protects the inner camera from most hostile vibrations resulting from a lapse in monitoring. Ideal for high volatile crime areas, the DeputyDome comes preassembled with either an IP or Analog day/night camera with 26x zoom. Also available is a pressurized model which protects the inner camera system from minute foreign substances.

- Meets / exceeds Level 1 protection per UL Standard 752
- Heavy-duty stainless steel housing construction and mounting bracket
- Unique rotating "turret" transfers ballistic impact to outer steel housing
- Lexguard™ shield which protects camera from bullet attacks up to 9mm
- Heater / blower feature
- Tamper-resistant fasteners
- Quick disconnect feature, which provides simple and fast installations and easy servicing
- Available IP or Analog PTZ models (Day/ Night Camera with integral 26x zoom)
- Pressurized models available: eliminating moisture, dust, insects and exhaust fumes

US Patented #6,354,749 B1

DeputyDome

The patented bullet-resistant DeputyDome is available in either a standard or pressurized model. The day/night color camera features an integral zoom lens. An integral pan/tilt with 360° continuous rotation is also included. Each DeputyDome comes with a quick-connect wall mount.

IP Ready and Analog models; also available Pressurized:

IP Ready (Network) Model:

DDW10CN2: DeputyDome™, Bullet-Resistant IP Camera System, PTZ and 26x Day/Night Camera System. Heavy-Duty Metal Gear Pan/Tilt. MPEG-4 & MJPEG video compression. Full DI. Clear dome, w/24Vac input, heater/blower.

Analog Model: DDW10CR2:

DeputyDome™, 10-gauge Steel Bullet-Resistant Outdoor dome PTZ Camera System w/26x Day/Night Camera, on-board receiver/driver, 24Vac heater.

Analog Model w/120vac input:

DDW10CR: Analog model DDW10CR2, 120Vac heater

Pressurized Model: PDDW10CN2:

Pressurized version of network model DDW10CN2. Pressurization eliminates dust, insects, and pollution; dry nitrogen eliminates fogging and condensation build-up.

Pressurized Analog Model:

PDDW10CR2: Pressurized version of analog model DDW10CR2. Pressurization eliminates dust, insects, and pollution; dry nitrogen eliminates fogging.

Pressurized Analog Model w/120vac input:

PDDW10CR: Pressurized DDW10CR2, 120Vac heater

DeputyDome Under Fire:

To view actual footage of a DeputyDome system being attacked, please visit www.videolarm.com and select **Press Room: Multimedia**.



Optional Components and Accessories:



SRM1500
Corner mount
bracket,
150 lbs. max



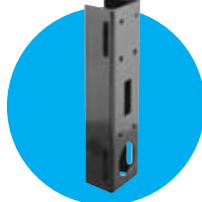
PS24
Rugged cast
aluminum
power box
w/84vA and
24vA power
supply



CA2
Corner mount
bracket
150 lbs. max



SRCW2000
Rotating roof-top
bracket, 150 lbs.
max.



PM3
Pole mount
bracket
for existing
3' - 10' poles
150 lbs. max.



VLC485
RS485 controller
(2) RS232 ports
(1) RS485port
joystick control.
Desk top model
24vac input power

Mechanical Specifications

Size: (Product/shipping)	16.5 x 14.5 x 12.75" 420 x 368 x 324mm (h*w*d)
Weight:	65 lbs/ 30kg
Construction	Top: Stainless steel Dome: Cell-cast acrylic Rotating Liner: Heat treated aluminum
Wall Mount Bracket:	10-gauge powder-coated stainless steel

Pressurized Models:

Pressure relief valve:	7 psi
Schraeder valve:	Nitrogen input
Power connector:	18 pin hermetically sealed

Camera Specifications

Image sensor:	1/4 type EXView HAD™ CCD
Signal Format:	NTSC, PAL
Number of effective pixels	Approx. 380,000 pixels
Horizontal Resolution:	470 TVL - NTSC • 460 TVL - PAL
Lens	26x Zoom f=3.5mm (wide) to 91.0mm (tele) F1.6 to F3.08
Digital zoom	12X (216X with optical zoom)
Angle of view	55° (wide end) to 2.3° (tele end)
Sync. System	Internal/External (V lock)
Minimum Illumination	1.0 lux (typical, color) (F1.4 normal shutter speed)
w/cut filter removed-	Near infrared, .02 lux IR
S/N ratio	50 dB
White Balance/Gain/Iris	Auto with manual override
Back-light compensation	On/Off

Environmental Specifications

Temperature Range:	-20°F (-29°C) to 120°F (49°C)
--------------------	-------------------------------

Electrical Specifications

Power Source: 120Vac:	115 VAC, 65VA
24Vac:	24 VAC (Class 2), 65VA
Video Outputs:	1 Vpp/75 ohm composite video

Network Specifications

Network Interface:	10/100 Base-T Ethernet
Protocols:	TCP(UDP)/IP, ICMP, HTTP, TFTP, FTP, Telnet, SMTP, DHCP, NTP, DNS, DDNS, RTSP, RTP/TCP(UDP)
Video:	MPEG-4; JPEG; MJPEG
Video Adjustment:	Brightness, Contrast, Hue, Saturation, Frame rate, Bit rate (Constant Bit Rate (CBR), Variable Bit Rate (VBR) w/quality level(s), Group of Pictures (GOP) size, Frame Sequence (I-Frame, I-Frame/P-Frame), Interlaced/ Progressive Scanning
Resolutions Full D1 (4SIF):	NTSC=720x480; PAL=720x576
SIF:	NTSC=352x240; PAL=352x288
QSIF:	NTSC=176x 112; PAL=176x144

For full product specs, go to www.videolarm.com and use the search engine to navigate to a specific product page.