



DESCRIPTION

For general purpose, economical surveillance the VideoKit™ CWPM8-5A is perfect. A hi-res color camera with 2.8-12mm auto iris lens sits atop the Videolarm's unique CWPM8 bracket. The bracket is black injection molded polycarbonate and is fully adjustable to a variety of viewing angles. It can be changed between wall and ceiling mount in a matter of moments to used in almost any application.

FEATURES

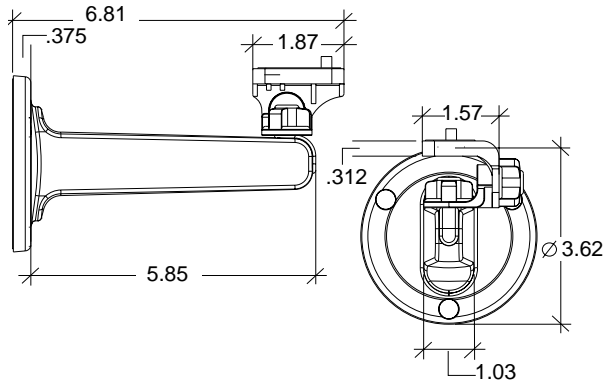
- Hi-res color camera with 2.8-12mm auto iris lens
- Wall or ceiling mount with quick and easy setup
- Convenient cable access slot
- Pan/tilt adjusts with grip-tight knobs
- Hole covers for concealing mounting hardware

CERTIFICATIONS

- Complies with Part 15 of the FCC Rules

ARCHITECTURAL/ENGINEERING SPECIFICATIONS

The VideoKit™ CWPM8-5A shall include a hi-res color camera with 2.8-12mm auto iris lens and an injection molded polycarbonate bracket. The camera shall have a horizontal resolution of 460 TV lines, with a minimum illumination of 1.2 Lux in normal mode and 0.8 Lux in hi gain mode at F1.2. The bracket shall be constructed of polycarbonate, and shall be designed to be switched between wall and ceiling configuration. Pan and tilt adjustment shall be accomplished using grip tight knobs.



MODELS

CWPM8-5A - Indoor fixed camera system with hi-res color camera, 2.8-12mm auto iris lens, universal wall/ceiling mounting bracket, 24 VAC input

OPTIONS/ACCESSORIES

OD1 - RC200C metal dust cover

ELECTRICAL SPECIFICATIONS

Power Input - 24 VAC

Power Consumption

Camera - 5 watts (208mA)

CAMERA SPECIFICATIONS - see page 40

SHIPPING SPECIFICATIONS

Model	Unit Weight	Shipping Weight	Shipping Box Dim.
CWPM8-5A	2 lb	2 lb	6 x 4 x 4

* Shipping weights depend on box dimensions.



CAMERA SPECIFICATIONS

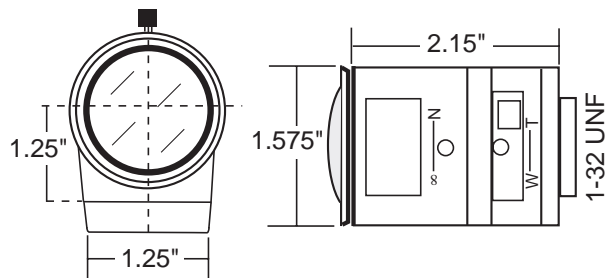
- Power Input - 24 VAC
- Image Sensor - Interline 1/3" Sony Super HAD CCD
- Scanning System - 2:1 Interlaced
- Sync System - Internal/Linelock (Switchable)
- Horizontal Resolution - 460 TV Lines
- Signal to Noise Ratio - 48db or more (AGC off)
- Minimum Resolution (F1.2) - 1.2 Lux Normal Mode
0.8 Lux Hi Gain Mode
- Gain Control - Automatic
- Backlight Compensation - Center Zone Detection (on/off switchable)
- White Balance - Automatic/Hold (push lock)
- Dimensions - 1.9" (H) x 1.9" (W) x 3.3" (L)

Super HAD CCD is a registered trademark of Sony Corporation

LENS SPECIFICATIONS

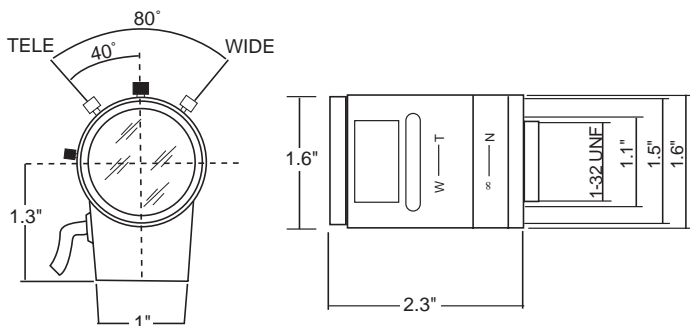
2.8 - 12mm Lens

- Focal Length - 2.8 to 12mm
- Iris Range - F1.4 to 360
- Iris Operation - Auto Iris
- Focus Operation - Manual
- Diameter - 1.57"
- Length - 2.2"



5 - 50mm Lens

- Focal Length - 5 to 50mm
- Iris Range - F1.4 to 185
- Iris Operation - Auto Iris
- Focus Operation - Manual
- Diameter - 1.7"
- Length - 2.3"



Neither the camera nor lens is available as a separately ordered item