

# SPECIALTY OUTDOOR HOUSINGS - BMT10

## DESCRIPTION

The BMT10 is a bullet resistant environmental camera housing. It features a 7-gauge steel body, and is designed and constructed to meet or exceed a Level II protection per UL standard 752. The enclosure has an integrated tilt bracket that protects all wiring and allows for surface mount applications. Camera/lens combinations up to 9.5" long and 3.25" wide can be accommodated by the BMT10, plus an innovative camera sled allows the camera to be rotated 360° within the housing to allow for any mount position.

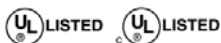


## FEATURES

- Accepts many lens and camera combinations up to 9.5"
- SP-1250 Lexgard® viewing window, with a Window Guard™ paint shield.
- Thermostatically controlled heater standard
- Durable, heat reflective, white powder coat finish
- Integrated tilt bracket to protect wiring
- Rotating camera sled allowing housing to be mounted at any angle
- Constructed from 7-gauge steel for strength and durability
- Designed to meet IP65 standards
- Optional sunshield

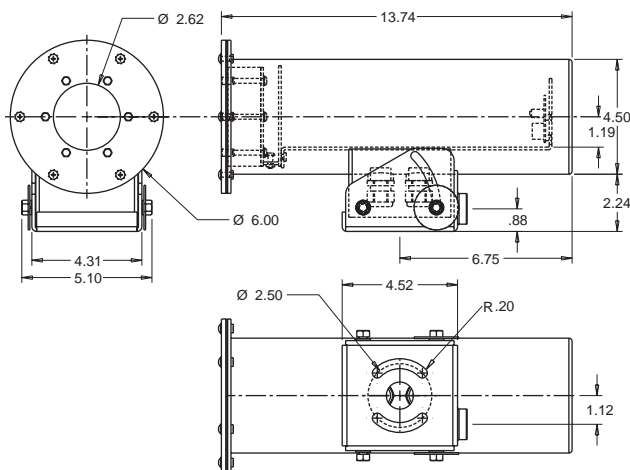
## CERTIFICATIONS

- Patented/US6,375,369 B1



## ARCHITECTURAL/ENGINEERING SPECIFICATIONS

The ballistic-rated environmental housing shall be constructed from 4.50" diameter steel tubing with a .23" thick wall, and shall include a thermostatically controlled heater. Front endplate shall be made from 7-gauge steel. The viewing window shall be constructed from SP-1250 Lexgard®, 1.25" bullet-resistant plastic with a vandal-resistant guard, and shall be bolted to the front endplate. The internal camera bracket, which will rotate 360° inside the housing, shall allow the housing body to be mounted on any angled surface. The enclosure shall have an integrated tilt bracket that protects wiring and also allows for surface mount applications. An optional .090" thick aluminum sun shield will be available. Both the housing and sun shield shall have a heat-reflective, white powder coat finish.

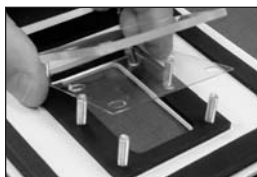


## MODELS

- BMT10C** - Ballistic-rated steel camera housing with clear view window, protective tilt bracket, and 115 VAC 28 vA heater
- BMT10C2** - BMT10 with 24 VAC 28 vA heater
- BMT10C3** - BMT10 with 230 VAC 28 vA heater

## OPTIONS/ACCESSORIES

- VLAY10** - .090" aluminum sun shield
- WMBMT** - BMT10 wall mount bracket



Videolarm's exclusive Window Guard Paint Shield™ helps protect housing windows from vandals using spray paint or paintball guns.

## ELECTRICAL SPECIFICATIONS

### Power Source

- BMT10C** - 120 VAC, 50/60Hz, 28 vA
- BMT10C2** - 24 VAC, 50/60Hz, 28 vA
- BMT10C3** - 230 VAC, 50/60Hz, 28 vA

## SHIPPING SPECIFICATIONS

Model	Unit Weight	Shipping Weight	Shipping Box Dim.
BMT10	Call Manufacturer For Detailed Information		

\* Shipping weights depend on box dimensions.