

SPECIALTY OUTDOOR HOUSINGS - AP21CH



DESCRIPTION

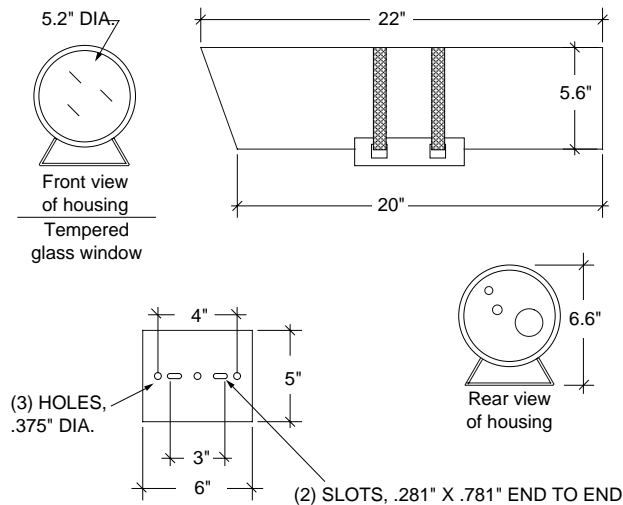
The AP21CH pressurized housing is designed to provide maximum protection for CCD cameras and lenses. Both the front and rear end caps are sealed with O-rings, keeping equipment safe from moisture, dust and insects. Power and video enter through MS style pressure connectors in the rear end cap. The front window is made of tempered glass.

FEATURES

- All aluminum construction
- Durable white powder coat exterior finish
- 115 VAC heaters included as standard feature
- 1/4" thick tempered glass window
- Mount plate designed to fit most outdoor pan/tilts
- Optional installed low pressure alarm sensor available
- Designed to meet IP67 standards

ARCHITECTURAL/ENGINEERING SPECIFICATIONS

The AP21CH housing shall be of all aluminum construction, with stainless steel housing bracket straps. End caps shall be sealed with lubricated O-rings and held in place with flat retaining rings. Front window shall be tempered glass. All electrical and video connections shall be made through the rear end cap, using MS style pressure connector. The housing shall utilize a Schraeder valve and a pressure relief valve. Maximum camera/lens length shall be 14".



MODELS

- AP21CH** - Pressurized aluminum housing with 115 VAC heaters
- AP21CH2** - AP21CH with 24 VAC heater (2.35 Amps)

OPTIONS/ACCESSORIES

- VLAY7** - Aluminum sun shield
- SH9000** - Swivel head adapter
- 9000HW** - Wall mount

ELECTRICAL SPECIFICATIONS

Heater - H1: Two 28 watt heater strips, 115 VAC, .48 Amps (total)

H2: Two 28 watt heater strips, 24 VAC, 2.35 Amps (total)

Thermostat - Turns on at 40°, and off at 60° F

Internal Power Connection - Position Euro style terminal strip

Connector - Souriau MS type 16 pin connector (mating connector provided)

SHIPPING SPECIFICATIONS

Model	Unit Weight	Shipping Weight	Shipping Box Dim.
AP21CH	10 lbs	10 Grd/14 Air	27 x 10 x 10

* Shipping weights depend on box dimensions.