

Countermeasure against Java viewer problem

Instruction manual for network camera or network camera server

Note

1. Make sure that this change is handled by a service technician who knows how to manipulate files via FTP. Make sure that the necessary preparations are complete before these operations, including making backup copies.
2. This method only applies to Internet Explorer.
3. Do this countermeasure by the person who is familiar with FTP. And make sure that you backup the original setting.

How to Upgrade the Java Viewer

Make sure that the PC and the VB-C10/VB-C10R (hereinafter VB-C10) or the VB101/VB150 are connected on the network. This upgrade will be made via FTP connection. (Cannot be made over a router)

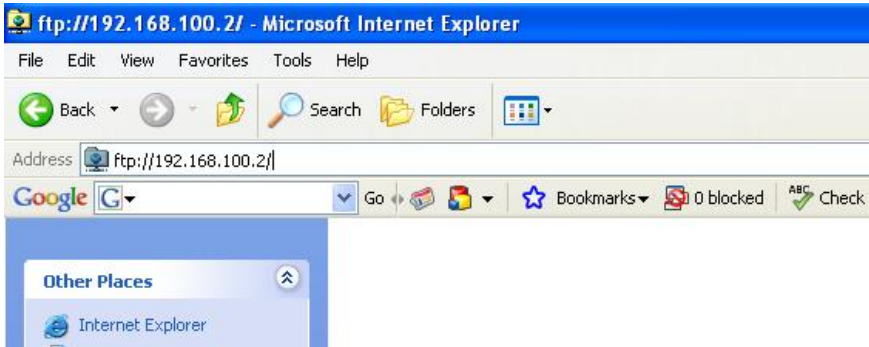
Preparation

Decompress the self-compressed updating file, LiveApplet4125.exe. The LiveApplet4125 folder will be created. In this folder, the following compressed files will be created. These files are used without being decompressed. lvapplet.zip, lvapplet.cab

Procedure

a) In case of VB-C10

1. Execute IE and type ftp://ip address of camera/. (e.g. IP address 192.168.100.2)



2. Input "User name" and "Password" and click [Log On].



The window indicated in Figure 4 will appear.
If a connection error appears at this point, open the Tools menu of IE => Internet Options => Advanced tab. Select the "Enable folder view for FTP sites in Browsing setting" check box and then retry.
Other FTP tools than IE can be used, but be sure to use the binary mode for the transmission mode.

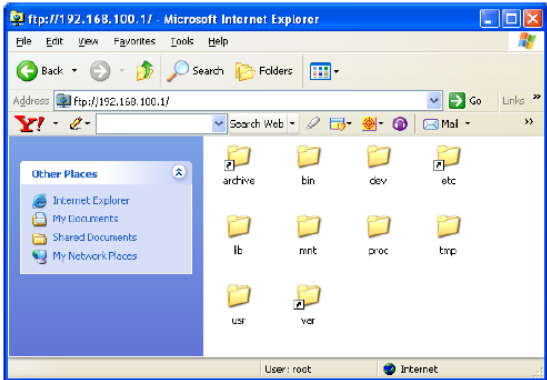


Figure 4

3. For the VB-C10, open mnt/flash/archive from the folder. (Figure 5)

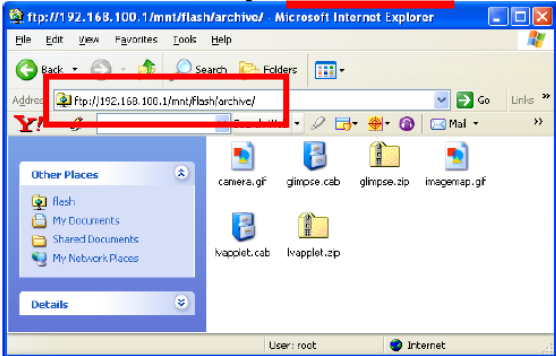


Figure 5

4. Update lvapplet.cab and lvapplet.zip.
A dialog box to confirm the file replacement appears, click **Yes to All**.

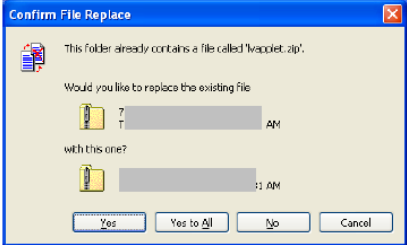


Figure 6

5. Rebooting the camera.
Open the Setting screen => Administration Tools => Miscellaneous => Click the Reboot button in the Reboot section.
Or you can turn the camera power OFF and ON.

Note:
The location of lvapplet.zip, cav
VB-C10: /mnt/flash/archive/
VB101, VB150: /ARCHIVE/

6. Check Java viewer
Check if Java viewer displays properly.

b) In case of VB101 and VB150

- 1. Execute IE and type [ftp://username:password@IP address](ftp://username:password@IPaddress) of camera.
(e.g. IP address: 192.168.100.2, user name: root, password: VB150)



The window indicated in Figure 4 will appear.
If a connection error appears at this point, open the Tools menu of IE => Internet Options => Advanced tab. Select the "Enable folder view for FTP sites in Browsing setting" check box and then retry.
Other FTP tools than IE can be used, but be sure to use the binary mode for the transmission mode.

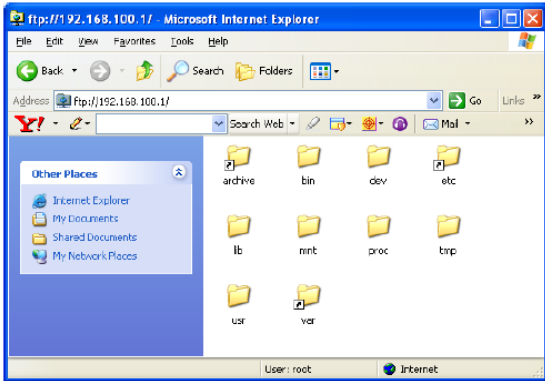


Figure 4

- 3. For the VB101 (or VB150), open /ARCHIVE/ from the folder.

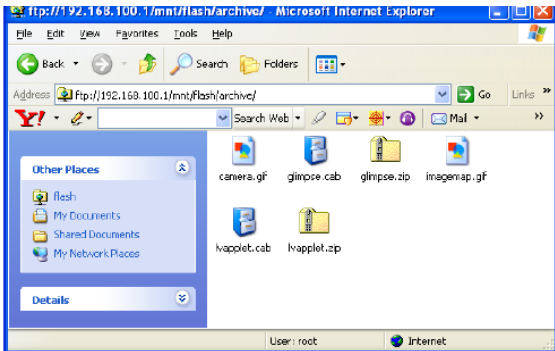


Figure 5

- 4. Update lvapplet.cab and lvapplet.zip.
A dialog box to confirm the file replacement appears, click **Yes to All**.

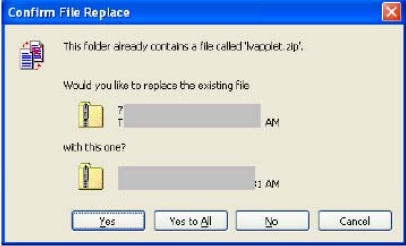


Figure 6

- 5. Rebooting the camera.
Open the Setting screen => Administration Tools => Miscellaneous => Click the Reboot button in the Reboot section.
Or you can turn the camera power OFF and ON.

Note:

| Model Name | Path |
|---------------|---------------------|
| VB101, VB150: | /ARCHIVE/ |
| VB-C10: | /mnt/flash/archive/ |

- 6. Check Java viewer
Check if Java viewer displays properly.